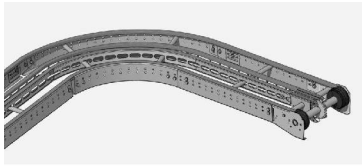


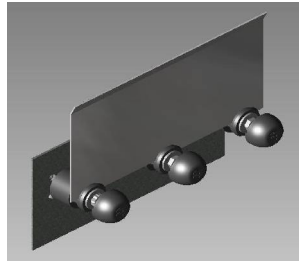
INSTALLING MOUNTING B GUIDE

Parts

The following parts are required to install the side guide:



AmbaVeyor track



Guide

M8 Bolt
M8 flanged nut
Lock washer
Plastic fixation piece
Plastic cover
Offset spacers (when needed)

Fixation materials

Tools

The following tools should be used to install the slide profiles:



Grinder



M8 wrench

Installing the side guide on the frame

The guide is delivered on rolls of 12 m [40']. Install the side guiding before you install the slat belt.

1. Start installing the guide at the drive or idler section and make a fixation point every 500 mm [20"]. Before actually placing the guide install several fixation points in order to handle the guide better. Place a fixation point using the below procedure: *
 - Place the lock washer
 - Place the fixation piece on the M8 bolt (with flat indent towards the top and the frame)
 - Place the offset spacer(s) (if needed) on the M8 bolt; offset spacers arrive in sections of 25 mm [1"] so if 75 mm [3"] offset is required use 3 spacers. Use the shortest M8 bolt supplied still left.
 - Place the M8 through the top hole in the frame and connect it to the M8 flanged nut
 - Tighten the bolt but make sure the guide plate can still be inserted in the fixation piece.
2. Once several fixation points are installed place the guide:
 - Place the guide with the flange to the outside
 - Position the guide correctly and tighten the M8 bolt to secure the guide
 - When transition rollers are present on the machine and the guide is mounted flush to the frame please cut away a section of guide in order to make it fit.
3. Continue fixing the guide every 500 mm [20"], at the end of a roll please observe the following advice:
 - Do not mate two guide pieces together in a curve
 - Mount the two joining plates flush against each other
 - Always place a mounting point between two ends
 - The guide must be cut when changing angle.

